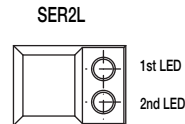
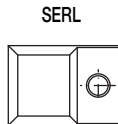
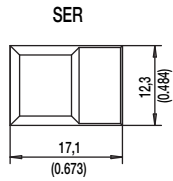
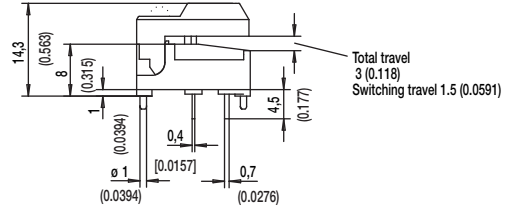
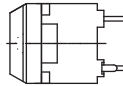
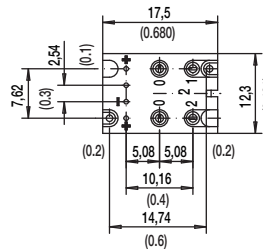


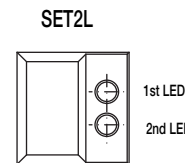
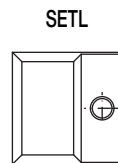
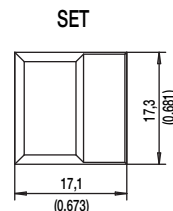
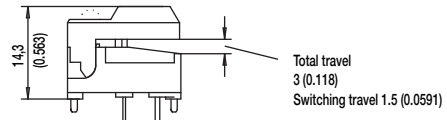
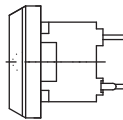
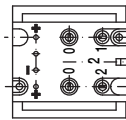
DIGITAST Microminiature SPDT, Key Switches

DESIGNATION

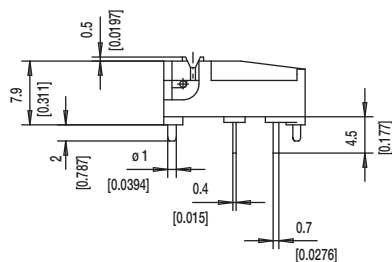
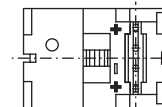
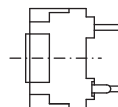
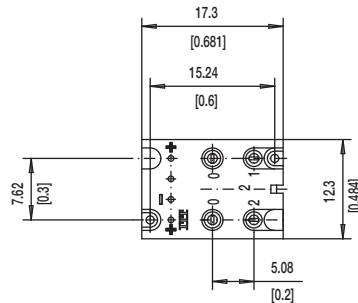
SER NARROW BUTTON



SET WIDE BUTTON



SERU NO BUTTON



Key Switches



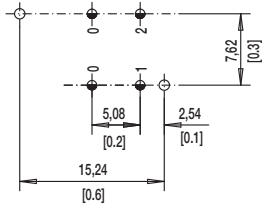
Dimensions are shown: mm
Specifications and dimensions subject to change



DIGITAST Microminiature SPDT, Key Switches

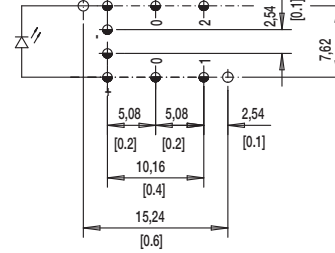
LED

NONE NO LED

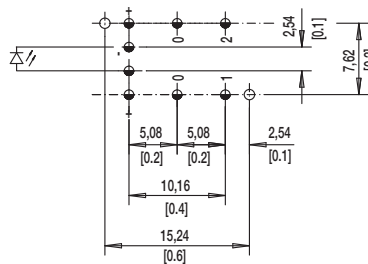


L 1 LEDs

7.62 mm Spacing (TYP No. America)

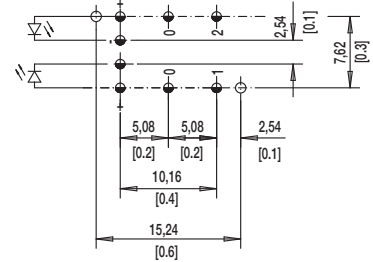


NARROW SPACING (TYP EUROPE)



TOP VIEW OF PCB

2L 2 LEDs



$\varnothing 1.0 \pm 0.1$ (0.0394 ± 0.00349)

$\varnothing 1.1 \pm 0.05$ (0.0433 ± 0.00197)

BUTTON COLOR

BK BLACK

GY GRAY

Other button colors available by request [red (RD), green (GN), white (WH), yellow (YE), blue (BU), orange (OG)].

LED COLOR

OPTION CODE	COLOR
NONE	Models without LED
RD	Red
GN	Green
YE	Yellow

CONTACT MATERIAL

OPTION CODE	MATERIAL
AU	Gold

FUNCTION

OPTION CODE	COLOR	SCHEMATIC
OA	Momentary	
EE	Push-Push	



First Angle
Projection

Dimensions are shown: mm
Specifications and dimensions subject to change



D

Key Switches